

Watchthis  
SPACE<sup>INC</sup>



**2 0 1 6**  
**ANNUAL**  
**REPORT**

4/9 George Crescent Alice Springs, NT 0870  
(08) 8952 1949 | [wts@wts.org.au](mailto:wts@wts.org.au) | [wts.org.au](http://wts.org.au)

# Contents

About Watch This Space: Who We Are & What We Do

History

Today: Our Mission & Organisational Goals

Organisational Structure

Our Board

Current Situation

Developments since 2015

Organisational Goals, Strategies & KPI's

Chairperson's Report

Coordinator's Report

Outcomes for 2015

Creative Program 2015

Treasurers Report

Financial Statement

## About Watch This Space

### **Who We Are...**

Watch This Space is an Artist Run Initiative (ARI) that has been running in Mparntwe/Alice Springs since 1993. It is the only contemporary art space in Central Australia within a 1,500 km radius. With a focus on experimental and multi-disciplinary art, WTS supports local, national and international artists, both emerging and established. We give artists an accessible platform to develop within a constructive critical environment.

### **What We Do...**

WTS aims to create and support a dynamic, artistic and sustainable community in Mparntwe/Alice Springs, supporting contemporary art practices that challenge and inspire. Artists intersect and share direct experience of all aspects of presenting and exhibiting whilst maintaining control over the entire creative process.

Our Annual Creative Program consists of exhibitions and presentations through an onsite gallery space and studios, Travelling Artist Residencies, offsite projects, collaborations and special events.

## HISTORY

The idea for WTS was seeded in 1991 as a response to the lack of contemporary arts activity in Alice Springs and was initiated by five artists; Pam Lofts, Anne Mosey, Jan Mackay, Angela Gee and Pip McManus. WTS became established as an Artist Run Initiative (ARI) in 1993. The first charter of Watch This Space stated that it was essential that it be artist run so it could maintain its independence from commercial galleries.

The first charter included the following **objectives:**

1. To provide a forum for artists wanting critical dialogue on works in progress and resolved works
2. To be a venue for emerging and professional artists as it was a non-commercial Space with no pressure to sell.
3. To be an exchange between artists around Australia and internationally with 50% local and 50% visiting artists.
4. There was a strong emphasis on collaborations between artists and all media.

TODAY

## **Our Mission**

*Watch This Space works to be a catalyst and conduit for conversations in the always evolving languages of art. We support contemporary art dialogue in Mparntwe/Alice Springs both inside and outside a gallery space, encouraging, nurturing and promoting Central Australian and visiting artists.*

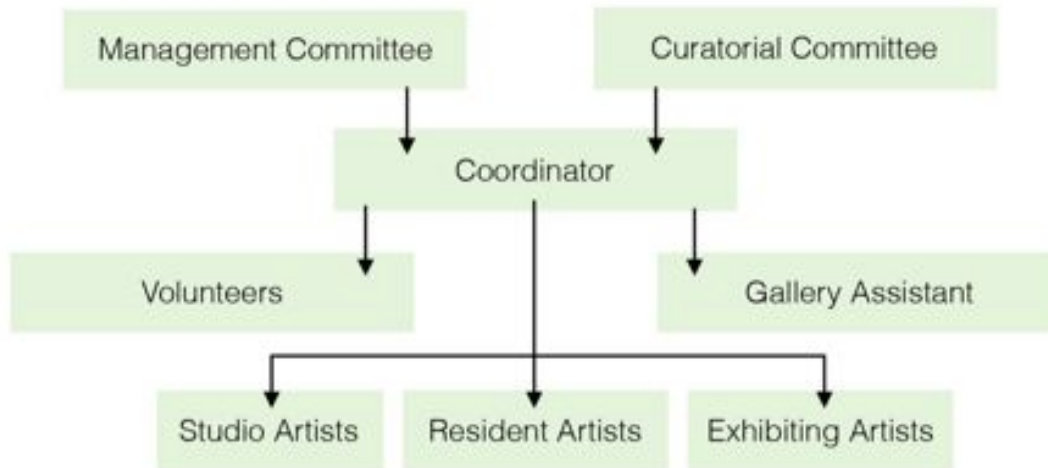
## **Our Organisational Goals**

- Creating opportunities for local artists work to be discovered and made visible through hosting contemporary art exhibitions.
- Providing opportunities for local, interstate and international artists to enrich the artistic and cultural life of Alice Springs through the delivery of high quality contemporary art activities.
- Fostering an inclusive creative community of artists who share skills and experiences with each other by accessing the onsite gallery and studio space.
- Offering professional development opportunities for artists including artistic/ cultural collaborations and skills development.
- Nurturing the full breadth of contemporary art activities including multi-disciplinary art forms, new media and installation works.



## ORGANISATIONAL STRUCTURE

WTS is a Not-For-Profit, DGR registered organisation with a Board membership base. We and the public elect our Management and Curatorial Committee and are staffed by a part-time Coordinator and on occasion a casual Gallery Assistant.



## OUR BOARD

As of December 2016

### ***Board of Management***

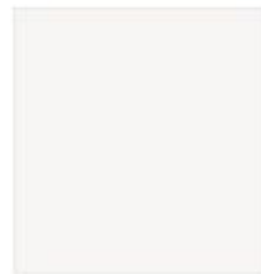
#### Executive



**Dan Murphy**  
Chairperson



**Beth Sometimes**  
Secretary

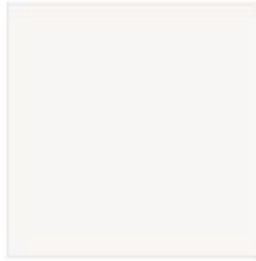


**Janet Wright**  
Treasurer

## General Board Members



Joaquin Hourbeigt



Frankie Snowden



Betty Sweetlove



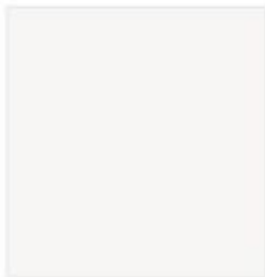
Dave Crowe



Ed Gould

## ***Curatorial Committee***

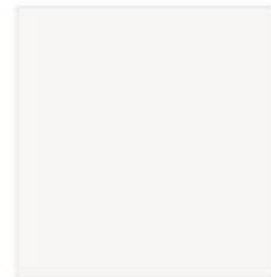
The Curatorial Committee meet 2-4 times a year with the Coordinator to review the exhibition and residency applications for our Creative Program.



Jasmine Crea



Leo Ortega



Stephen Williamson

WTS would like to thank the huge efforts and support of Lucy Stewart who stepped down as Treasurer in September 2016. We would also like to thank Elliot Rich, Jenny Taylor, Sarah Marocco, Ellé Misios, Sia Cox and Mary-Jane Reynolds, all of whom were part of the Board up until the end of this year who contributed to the space with their expertise, support and passion. Thank you to Steve Anderson for his continued support through technical assistance.

## CURRENT SITUATION

The WTS Program has always included a high quality program with diverse content from a variety of artistic disciplines. The capacity of Management and Curatorial Committee members and staff to initiate and inspire innovative contemporary art events hosted at WTS has been an enduring organisational strength. However, WTS's capacity to deliver the program to the best possible standard has often been unrealistic due to the sheer work involved, limited funding and human resources and sometimes lacking volunteer support.

This year the organisation suffered a period without a Coordinator. While this led to a lag in administrative responsibilities, the year was still full of arts and cultural events with the space's Board and Studio Artists taking the initiative to keep things going. Once instated, the new Coordinator made it a priority to amend the administrative issues, and 2017 will see the space running smoothly again.

## DEVELOPMENT SINCE 2015

- New Coordinator: Alexandra Hullah retired from the position in May after burnout from the demanding role, and in September Zoya Godoroja-Prieckaerts joined the space to take up the position.
- New artists to the space: Beth Sometimes and Pete Raftos were welcomed to the space as Studio Artists. The two have contributed greatly to the space providing endless enthusiasm and expertise.
- Transitions on the Board of Management and Curatorial Committee: after a number of members retired from the Board, many of our artists found a keen interest in contributing in other ways to the space and so decided to join our Board. They have brought passion and creativity to the Board and, as they are often in the space, have been able to readily and directly assist the Coordinator on numerous occasions.
- WTS secured its triennial funding at the end of 2016 from the Northern Territory Government through Arts NT.
- Improvements to the space: a suitable wall was installed in the Travelling Artist Residency Studio, as well as shelving in the kitchen and tool area to better organise and manage equipment use.

# ORGANISATIONAL GOALS, STRATEGIES & KEY PERFORMANCE INDICATORS

## From 2014-2016 Business Plan

WTS delivered many, if not all of the following KPIs in 2016. Please see proceeding pages for detailed outcomes (pgs. 14-15) and programming (pgs. 18-37).

### Purpose

### Strategy 2014–2016

<p>Be known as an inclusive contemporary arts organisation that presents cutting edge, high quality art and cultural events by emerging and established practitioners.</p>	<ol style="list-style-type: none"> <li>1. Actively encourage the general public to become involved with the organisation through membership, volunteering, taking up an artist studio, attending a workshop or event.</li> <li>2. Broaden WTS advertising for key events and callout for exhibition proposals in industry publications.</li> </ol>
<p>Provide opportunities for local, interstate and international artists to enrich the artistic and cultural life of Mparntwe/Alice Springs by delivering exhibitions and events.</p>	<ol style="list-style-type: none"> <li>1. Select 3 local artists per year with at least one emerging artist’s show.</li> <li>2. Select 2 interstate artists per year with a strong contemporary focus for their exhibition engaging with a national dialogue/cutting edge/innovation in contemporary art.</li> <li>3. Deliver 1 WTS initiated, curated show with a strong contemporary focus per year.</li> <li>4. Deliver 1 group show per year.</li> <li>5. Deliver 1-2 non-visual art programs each year.</li> </ol>
<p>Run professional development opportunities for artists including artistic and cultural collaborations and skills development</p>	<ol style="list-style-type: none"> <li>1. Deliver 2 professional development workshops per year for artists and creatives. This may include sessions on how to market your work, financial management, grant writing etc.</li> <li>2. Deliver 6 artist talks per year.</li> </ol>



workshops.	3. Deliver at least 2 workshops for artists and creatives, this may include painting techniques, life drawing classes or songwriting workshops.
Nurture the full breadth of contemporary visual art activities including multi-disciplinary art forms, new media and installation works as well as traditional art mediums.	Ensure the full breadth of contemporary creative endeavours are covered in each years program: multi-disciplinary art forms, new media and installation works as well as traditional art mediums.
Ensure financial sustainability by receiving income from multiple sources: government operational and project funding; self-generated revenue, sponsorships and donations	<ol style="list-style-type: none"> <li>1. Target local businesses for cash or in kind sponsorship.</li> <li>2. Source donations from art lovers or philanthropists.</li> <li>3. Source funding from non-arts funding bodies.</li> <li>4. Source project funding.</li> <li>5. Increase WTS commission on artwork sales to 25%.</li> </ol>
Have organisational policies and procedures that support organisational purpose and maintain quality and consistency of activities	<ol style="list-style-type: none"> <li>1. Update at least two policies per year.</li> <li>2. Update at least 6 procedures per year.</li> <li>3. Management Committee meets monthly</li> <li>4. Working groups from Management Committee set up for specific initiatives.</li> <li>5. Curatorial Committee meets bi-monthly.</li> </ol>
Continually widen the reach of our programs by ensuring effective marketing and promotion	<ol style="list-style-type: none"> <li>1. Develop new audiences through promoting WTS nationally using social media tools: Facebook, Twitter, Pin it, Blogs. Increase editorial content in local and national publications.</li> <li>2. Advertise for exhibition callouts and key events in industry magazines.</li> </ol>

## Chairperson's Report

Once again Watch This Space has had a successful year supporting artists and creating an interesting program of unique and diverse arts activities for the community of Alice Springs. I have to repeat the words I said last year about our coordinator Alex Hullah who started our year for us but has since moved on and been replaced by Zoya.



Alex's passion professionalism and energy were an inspiration as could be seen by the diverse array of engaging creative events she was able to manifest through managing supporting, encouraging, mentoring, resourcing, humbugging and slaving for artists and presenters, and for the audience, too.

Alex ran a quality program for WTS that allowed emerging and established artists and the broader community opportunities to exhibit, participate in, contribute to, or witness the ongoing exploration and creation of contemporary arts in central Australia.

Alex, retired from her position during the year and we were very sad to see her go and must commend her for all her marvellous work and dedication.

Over the years it has amazed me the quality and dedication of the staff we have been able to attract into a difficult and demanding position that often leaves the coordinator unfortunately overworked and under payed. Alex felt this strongly but continued to work beyond the call of duty and endeavoured to help the organisation to deal with this issue and to make the job and the Space more sustainable.

It was sad to see Alex go but we wish her the best in her future endeavours. It is worth remembering that our coordinators seem to turn over every two years or so and the board needs to prepare for this and make sure we are ready with succession planning.

A change in coordinators while it always causes some difficulty is not necessarily a bad thing as new coordinators tend to bring new energies, ideas and connections that help to keep Watch This Space a vital and dynamic organisation. Also it is good to see that so many of our coordinators have gone on to further their careers as arts workers and artists in many and varied positions. I like to think that the experience of working at WTS and within a strong and supportive arts community has contributed to our past workers continued success.

Alex left her job at the space mid-year and while not having a coordinator created difficulty for the organisation, Alex had prepared us for her departure and it was extremely gratifying to see the board members and studio artists step up to ensure the continuation and successful implementation of our program.

Watch This Space has been able to find a new coordinator, Zoya Godoroja-Prieckaerts, who started with us in September and has settled well into the job and community and is doing a

fantastic job. As I said before it has amazed me the quality and dedication of the staff we have been able to find over the years and Zoya continues this tradition. Zoya hit the ground running, coming into a space that was a bit behind in everything, after not having an employee for a few months, and has brought us up to scratch and is, like so many of our workers before, empowering, inspiring, supporting and furthering our organisations aim to be a vital and strong contemporary arts organisation as well as a strong community space.

While watch this Space has been a consistent and valued part of the community for 20 plus years each coordinator brings their own flavour and I think Zoya is looking very tasty.

The space held many interesting and exciting exhibitions and activities through the year which are listed elsewhere in our report, we continue to meet or exceed our KPIs and have a strong basis upon which to build a strong and long future.

The board this year has had some old members leave and some new members join us and is very solid, enthusiastic and capable. The board and others were able to step up and hold the fort while we were in a transitional phase between coordinators and I must thank them for all their efforts.

Our finances are in a good position, as our auditors report will show, we have once again an awesome coordinator to help us continue and connected and interested audience.

We have made plans for moving our space to a much more prominent position on Gap Rd and so the future is looking strong for Watch This Space.

“ All this activity, our organisation, Watch This Space and all ARIs are a manifestation of the passion and energy of contemporary artists for their practice and their desire to share the journey with the broader community. The fact that we are still here after twenty or so years and can continue to draw and engage a generous and diverse audience is a demonstration of the desire of the broader community to join with the arts in the journey of reflection, discovery imagining reinterpreting and understanding the environments in which we live and an indication of the importance of WTS in providing a place for this to happen.

Artists Run Initiatives like WTS always run on passion and energy from within the artists and community, so I would encourage you all to continue to invest some of your passion in WTS and perhaps join the Board and be part of steering the ship or volunteer to support with some of the many simple tasks that make up a part of a beautiful big community arts space. Or have an exhibition create a performance, play some music, make some art.

”

**Dan Murphy**

WTS Chairperson

# Coordinator's Report

Zoya Godoroja-Prieckaerts



## ***A rollercoaster of a year***

I started the role in September and quickly found WTS to be full of energy and enthusiasm. The studio artists have been contributing immensely to the space throughout this year with their generous support, skills and passion. They were key to keeping the space alive during the months without a Coordinator.

The first half of the year saw Alexandra Hullah as the Coordinator of the space. As always, Alex was passionate and ambitious, creating and assisting with the making of some incredible work during the year. *The Labyrinth* installation created for Wide Open Space was her vision. It involved performance, architecture, installation, music, painting and more. The project was a huge success, with viewers still commenting on its glory to this day. Her huge contributions and passionate energy, however, led her to “burn out”. Alex left Watch This Space midyear.

The next three months were difficult with the space lacking a Coordinator. As anyone can imagine, with no Coordinator to complete the administrative roles, the organisation encountered issues in regardarding reporting, financials and gallery minding. The studio artists gave as much time and support to see these areas were sustained, however the volunteered work wasn't enough.

The Studio Artists, however, took on a lot of responsibility during this time. They ran a very successful music event, Splendour in the Alice Springs Industrial Area, and held exhibitions whilst accommodating visiting residents.

When I was eventually hired, the organisation was behind with its reporting and financials. The fire department also had issues with our building which lead to the big changes that 2017 will see with the organisation relocating to Gap Road. The reporting was eventually sorted and with the help of our acting Treasurer, Janet Wright, the financials were back in order.

Creatively, the organisation had a spectacular year! The first half saw exhibitions by a number of local artists which strongly engaged the Alice/Mparntwe community. All exhibitions were very successful. *Mind The Gap* was the first exhibition during my tenure. This show attracted a huge audience and a range of demographics to the space. The always-experimental Beth Sometimes attracted 16 attendees to her 5am event, *Spy Feel* – a turn out we were extremely happy with! The next show, *Sunset Viewing Area*, was one of the most special openings of the year with all attendees very excited and intrigued by the work, engaging deeply in critical discussions. The Loftys was a touching event as Doris Stuart deservedly received the award and was celebrated over the night. The final exhibition of the year was *Debatable Estates*.

Locals were very impressed by this work and touched to see such deep and critical engagement from the artists with the Mparntwe/Alice Springs community.

I am very excited for the year ahead and the creativity, inspiration and innovation that will come out of the space. I feel honoured to be part of such an important organisation to the Central Australian community, one that engages with people from a range of demographics, ages, languages and interests. It is an influential and powerful organisation.



Viewers enjoying the Shy Guise Zine Fair – a beautiful afternoon of reading, laughing and sharing

## CHALLENGES & STRATEGIES

### Challenge

### Strategy

#### **Infrastructure**

Watch This Space has a strong community where everyone supports one another. It's building, however, is less structurally sound. This has been a major challenge throughout 2016, creating issues with the fire department and licensing. For the space to function efficiently, the building needs to be brought up to code and meet all legal and safety requirements. This requires funds to be put into fixing and maintaining the structural integrity of the building, that of which is the responsibility of the owner. However, this responsibility has not been undertaken and we are faced with rectifying these issues on our own. Since our budget can not accommodate these obstacles we have to find additional funding, that of which is far greater than what we usually seek.

If our building is not up to code by mid-2017 we will face serious issues with licensing and may need to seek residence elsewhere. This will, of course, create a huge challenge for the already-understaffed organisation such as finding appropriate exhibition space and studios for our local and visiting artists.

- Receive co-operation and action from landlord to fix the building's problems such as raising the roof, getting a Certificate of Occupancy and correct building permits.  
OR
- Receive funding (possibly from the Immediate Work Grant) to fix the problems ourselves with no input from the landlord, and in turn receive lower rent.  
OR
- Relocate to a new space

#### **Community engagement**

The space has seen a downfall in the local community's engagement with the space. We have received few applications from local artists to be involved in our Creative Program and received queries from the community asking why the space doesn't "feel very local" these days. We have made plans for 2017 to address this issue and feel that perhaps this is in part due to the mid-year period when the space was without a Coordinator. The absence of which may have contributed to a lack of advocacy for the space and its program at the time, leading locals to feel out of touch and even unaware of WTS events.

- Directly contact and invite local artists to be involved in the program.
- Create pathways with local high schools and CDU.
- Develop more projects that involve the local community.
- Constantly advertise and promote events and opportunities through web-based and hard-copy devices.

## Governance

Our funding bodies have expressed that the inclusion of our Studio Artists on our Board could constitute a potential conflict of interest. Since hearing this we have planned meetings for 2017 to amend this issue. We have taken this into serious consideration and want to practice Good Governance so our organisation can run as efficiently and effectively as it possibly can.

- Arts NT have suggested “looking at a model where the governance committee is separated from the artistic programming committee and to increase transparency around conflict of interest policy and procedures.”
- WTS is meeting with Arts NT in 2017 to discuss this issue. The WTS Board will then convene to put these strategies into action and practice Good Governance.



Viewers contemplating work at the opening of *Debatable Estates*

# Outcomes for 2016

## KEY FIGURES

### **Our 2016 Creative Program realised**

- 9 Contemporary Art Exhibitions
- 6 Residencies undertaken by 12 Artists
- 5 Special Community Events
- 3 Special Community Projects

### **Of These**

- 3 Off-site Creative Works
- 10 Opportunities created for local artists
- 6 Live Performances
- 5 Onsite Studio Artists continuously supported
- 2 Intercultural works that saw WTS collaborate or support Indigenous artists or custodians
- 1 Artist grant successfully auspiced
- 2 Screenings
- 1 Fundraising event for WTS

### **Partnerships (formal and informal) with other organisations**

Red Hot Arts, Tangentyere Artists, Artback NT, Arts NT, Music NT, Alice Springs Town Council, Wide Open Space, Red Dirt Poetry, Pride Carnivale, 8CCC Community Radio, IPAN, Treehouse Theatre, ABC Radio, Alice Springs Public Library, Anton's Recycling, Central Australia Art Society, The Alice News, The Centralian Advocate, Central Craft

## ARTS PRACTICES SUPPORTED

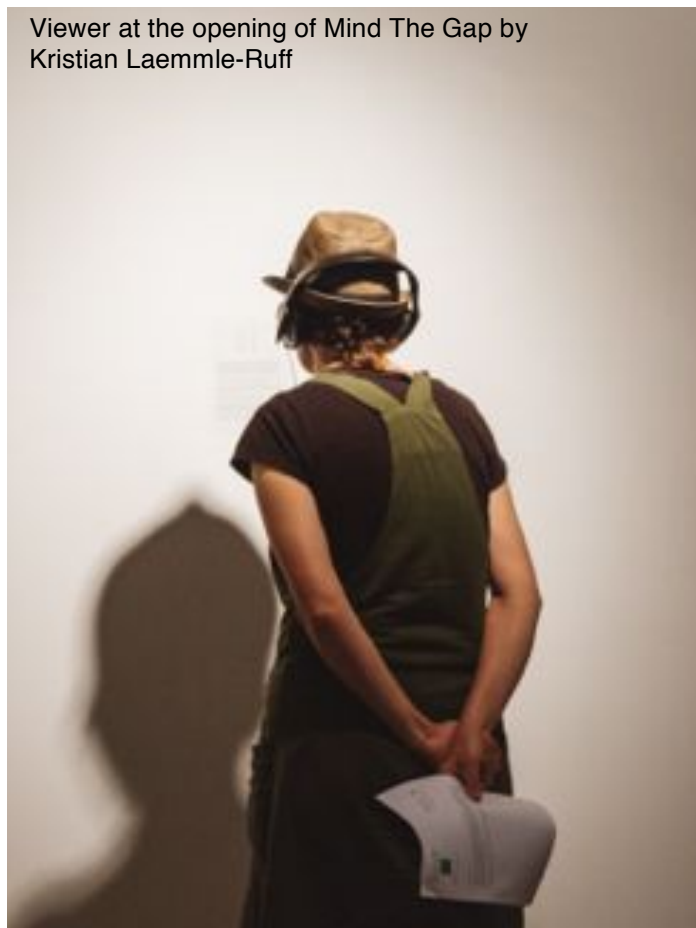
Painting, drawing, sculpture, performance art, installation art, live music performances, Aboriginal art and music, cultural work, relational aesthetics, sound art, socially aware and politically engaged art, film, video, contemporary dance, photography, community choir, site-specific work, cultural festival, screen-printing, interactive and live art, literature, booking-making, zines, performative drawing, mixed media, textile art, soft sculpture, artist talks, indigenous and non-indigenous artists including local, NT-based, interstate and international artists.

## TRAVELLING ARTIST IN RESIDENCY PROGRAM

This program has been the strongest it's been to date. This year we hosted six residencies that supported twelve artists, all of which created new work of a high calibre. We were able to support artists by providing low-cost studio fees, networking connections, research resources, creative feedback, advice and professional support. While our program offers a non-outcome based residency to allow artists the opportunity to work freely without pressure, many residents produced innovative exhibitions to be included in our Creative Program. We found the program to be highly conducive to artists creating new work and connecting with the community art scene, whether with individual local artists or broader networks. Through the program,



Viewer at the opening of Mind The Gap by Kristian Laemmle-Ruff



interstate artists engaged with the landscape, Mparntwe/Alice Springs community, and fostered connections with the NT at large.

The success of these 2016 residencies have seen a spike in the number of applications received for our 2017 program. Artists from around Australia are inspired and interested in engaging with Central Australia, and we want to see this interest continued. While we can not expand our intake for reasons regarding infrastructure and administrative work load, we are excited about and reassured by the program's influence. By attracting Australia-wide artists we can strengthen the local arts community and interest in Central Australia.

## THE LOFTY AWARDS

This year saw the annual Lofty award being presented to Doris Stuart in recognition of her support of contemporary arts in Alice Springs, specifically through her partnering with Watch This Space to provide occasional sacred sites tours through her homeland, Mparntwe, for the past 9 years. These tours have been primarily targeted at artists and cultural workers and have always been well received and are very much in demand. Much of the artworks created and or exhibited at Watch This Space over the years have been created as a process of finding connection to or understanding of the unique environment both physical and cultural in which we live in Central Australia. Doris' work through these tours has inspired informed and enabled much of this art. Watch This Space is proud of our ongoing relationship with Doris, an important custodian for Mparntwe, and her families.



Doris Kngwarraye Stuart receiving the 2016 Lofty Award

Watchthis  
SPACE<sup>inc</sup>



**2 0 1 6**

**CREATIVE  
PROGRAM**

## Alice Sings

Pop-Choir run by Edward Gould & Dave Crowe

Every Sunday, all year long

The Alice Sings Pop-Choir is a community program run by WTS studio artists, Ed Gould and Dave Crowe. The choir is open to anyone and everyone, free of charge, to bring people together through music. It doesn't matter if you've never sung before in your life or you're a talented opera singer, there's a place for everyone.

The choir runs on a weekly basis in the WTS gallery with public performances for the community throughout the year and a not-so-Christmassy Christmas Concert at the end of the year.

Choir Masters Ed and Dave provide all their time, energy and passion as volunteers, with all funds raised from performances going back to the performers.

This is an open and safe space for the community to engage in music and make some new connections along the way. Plus it's loads of fun!





## David Bowe Memorial Weekend

12 – 14 February

This weekend... is BOWIE WEEKEND.

Free events. All welcome.

Joining forces with Fantastic Voyage (Rhett Hammerton & Ed Gould, those local boys that bring you intergalactic aural treats at Epilogue)

FRIDAY // Fantastic Voyage present "Bowie Night" @ Epilogue Upstairs 8PM onwards. Dress-Ups encouraged.

SATURDAY // WTS screens The Man Who Fell to Earth / WTS 8PM / bring your swag and snax.

SUNDAY // Alice Sings Pop Choir learns "Pressure" / WTS Gallery 3 - 4:30PM.



## Labyrinth An Environment at Wide Open Space Festival

29 April – 1 May

Watch This Space has a special project for Wide Open Space Festival.

LABYRINTH is a large scale interactive installation and art environment that will be onsite during the festival. The space will be a large maze-like structure that will house visual and live art performance and installations that will challenge your senses and stimulate your imagination. It's a collaborative project bringing together art legends, local and interstate including: Fina Po, Jonny Rowden, 2nd Toe Dance Collective, Rhett Hammerton, Felix Myer, Alexandra Hullah, Cy Starcken, Holly Preston and Loren Bell, Ed Gould, Dave Crowe... to name a few...

installations include: MINOTAUR - an interactive encounter and journey within with the beastly within. SWAMI by Amy Victoria - The Swami in the depths of the Swamp of Sadness will guide you to transcend emotional reality. DOUGH-BOY (working title) by Jonny Rowden - An interactive work that invites you feel 'kneaded' and partake in the act of 'breaking damper'.

More to be announced...

Artists of Watch This Space will be conducting art-making and construction during the month of April for Labyrinth. If you would like to volunteer and get involved, get in touch! (08) 8952 1949 or [wts@wts.org.au](mailto:wts@wts.org.au)

## Reconnaissance

An Exhibition by Pip McManus

13 May - June 3

Through a multimedia installation, Alice Springs artist, Pip McManus, reflects on the wartime experience of her father, a Catalina pilot based at East Arm during World War II.

"I was never given a story as a child to explain the absence of a father. It was a taboo subject. In 2010 I was invited to participate in an exhibition Manila, the theme was ancestral stories. This provided an extraordinarily timely opportunity to investigate this story as not long before my father's flying log book came into my hands. Reading it was both revealing and sobering. He flew Catalina flying boats, out of Darwin, throughout the Pacific region in the final stages of World War II. As it turns out, the most intense entries all relate to sorties in and around the Philippines. The log book and cloth escape maps (carried by pilots when flying over enemy territory), along with family photos and archival footage have provided the primary source material for this video/installation work"

OPENING Friday 13th 6PM - 9PM @ WTS  
EXHIBITION 13 May - June 3 @ WTS  
ARTIST TALK Saturday 21 10:30 -11:30am

Artists, Pip McManus, with work in her *Reconnaissance* exhibition



ARTBACK NT PRESENTS

**TONY ALBERT**

(Australia)

**TIMOTEUS ANGGAWAN KUSNO**

(Indonesia)



*“125 in 110 Zone”*

Pop-up exhibition at Watch This Space

Opening and artist talk: Saturday 19 June, 11am



125 in 110 Zone

A pop-up exhibition and artist talk by Tony Albert & Timoteus Anggawan Kusno  
In Association with Artback NT

18 June

Tony Albert from Queensland and Timoteus Anggawan Kusno from Yogyakarta are this year’s recipients of the Kerjasama Residency program. Through his art practice Tony questions how society understands, imagines and constructs difference while Angga is interested in historiography and his practice seeks to expose dominant culture meta-narratives that pervade colonised countries.

The two artists have been collaborating on a project during their time in Alice Springs as well as working with artists from Ngurratjuta. The artists arrived last month and are now in the final days of stage one of their reciprocal residency.

Tony and Angga are eager to share their experiences and showcase the work completed and in process through a pop-up exhibition and artists talk this Sat at 11am. All welcome.

Melankolia  
by Mela Meercat  
&  
Metamorphoses  
by Gretel Bull

23 June – 8 July

An exhibition of photography and poetry  
Opening Thursday 23rd June, 6-8:30pm

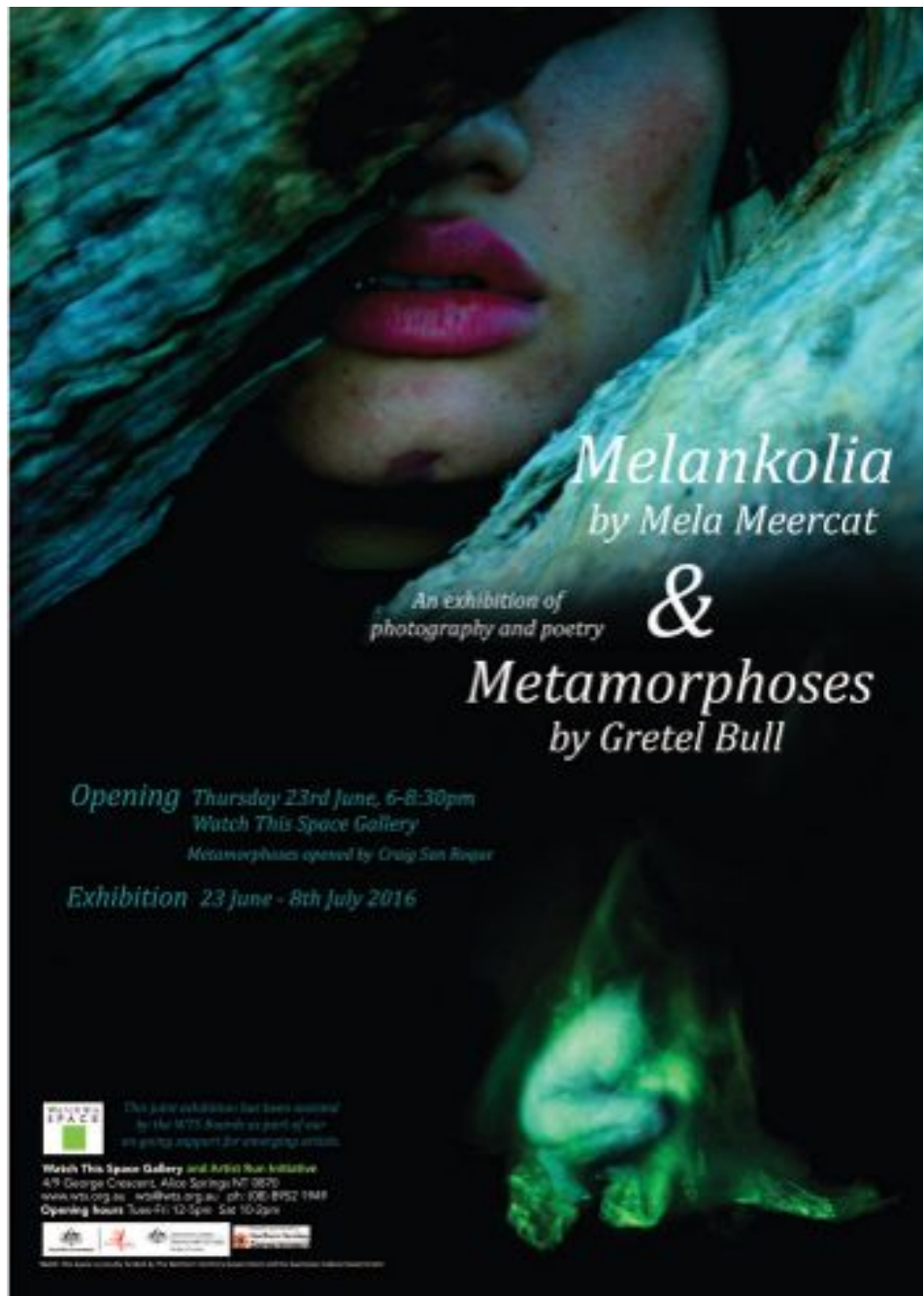
Metamorphoses to be opened by Craig  
San Roque.

'Melankolia' and 'Metamorphoses'  
present a complimentary dichotomy;  
both artists use the female body to  
explore the theme of an intangible  
connectedness to something greater  
than the self; but the artists diverge in  
both theory and aesthetic. Body and  
movement are central motifs: hovering  
in blackness the body morphs and  
changes, defying the physical and  
displacing the self. The boundaries  
between wilderness and civilisation  
collapse, and woman emerges as body  
and flesh, animal and plant.

Following Nietzsche, 'Melankolia', seeks  
to subvert the fall from nature at the  
hand of decadence, stripping away the layers of civilization to uncover the sensual innocence of the body once more. Mela's work expresses a deep melancholy, a longing to return to a natural union between woman and nature, each nurturing the other in symbiotic coitus.

'Metamorphoses' looks inwards, exploring the Jungian notion of the collective unconscious as an infinite web connecting us all. Taking inspiration from classical mythology, specifically Ovid's tales of transformation, these images explore the process of metamorphosis; the perpetual transformation of the psyche as it reacts to the world around it.

Re-wilding Laboratory







A Pop-Up exhibition by Fina Po & Trevor Flinn

30 June – 2 July

Watch This Space resident artists Trevor Flinn and Fina Po host a pop up in Alice Springs CBD and invite you to join them in 're-wilding' activities.

Sustainable Couture's pop-up shop will also be open 2 doors down and the usual Epilogue Open Mic night nubbub is just around the corner. Woohoo Thursdays!

Open 6-9pm at 2A Todd St (next to the old Uncle Eddy's, entrance on Gregory Tce).

*Artists in conversation / Q&A at 11 am Saturday 2 July*

As the conclusion of their studio & shop front residency, artists Trevor Flinn & Fina Po invite you to join them at the 'Rewilding Laboratory' in a conversation about all things related to art, nature & performance. Freshly baked Cake & tea provided.

A BIRD EVENT

# SPLENDOUR IN THE ALICE SPRINGS INDUSTRIAL AREA FEAT. PHIA, RAYELLA AND RESIN MOON

## Splendour in the Alice Industrial Area

2 July

FEAT. PHIA, RAYELLA AND RESIN MOON

5pm – midnight

Tix on door \$20 FULL / \$14 CONCESSION

Under 18s to be accompanied by an adult

It's exciting times. Watch This Space is very proud to present an extra special evening featuring local and interstate bands:

[Phia](#) is "a live-looping frenzy of percussive hands, vocal beauty and..the African kalimba" (Artrocker, UK). Born in Melbourne, Phia studied classical and improvised piano at university, before growing restless and moving to Berlin. Anonymous and liberated, she played every small bar in the city, toting her african kalimba and loop pedal in her bicycle basket and making her "...hypnotic, joyful, [and] definitely-danceable" pop music. This is an unique opportunity to catch Phia for her first performance in Alice Springs, before she heads back to Europe on tour.

[Rayella](#) is a family band from Marlinja Community, located approximately 730 kilometres south of Darwin in the remote Northern Territory of Australia.

Rayella's have accrued an impressive list of achievements in the short time they have been performing together including performances at Garmalang Festival (NT), Canberra National Folk Festival (ACT), Nannup Festival (WA), an incredible collaboration with US music legends The Violent Femmes, and a standout showcase performance at the Australasian World Music Expo (AWME) in Melbourne in 2015. Rayella were selected to tour remote Australia with The Country Arts WA SandTracks Tour as well as being invited to perform at the famous MONA Museum in Tasmania and the Folk Rhythm and Life Festival in Victoria.

[Resin Moon](#) is an Alice Springs electronic producer who has been getting national attention with the 2016 single and music video 'Salt'. You've very probably heard it kicking around on Triple J of late. "Stunning" Japanese Wallpaper. "Dang this is pretty. Beautiful." Zan Rowe. "Ethereal, beautiful – I could easily float away with this song" Dom Alessio  
The Salt EP, to be released in July, will feature songs recorded in Alice Springs and Los Angeles. For lovers of Metronomy, Animal Collective and M83.

The evening will also feature a one-off collaboration with the Alice Sings Pop Choir.



The Togetherness Of Things  
A performative drawing event by Caryline  
Boreham and Frances Hansen

10 – 13 July

CLOSING EVENT Wednesday 13 July 5-7pm

A performative drawing event / installation and open studio  
by Watch This Space artists in Residence Frances Hansen & Caryline Boreham (NZ)

Exhibitions runs Sunday July 10 - Wednesday July 13, 2016.

During our intended event, we are interested in testing the performative possibilities of drawing. By inviting the public to witness the process of improvisation and collaboration that takes place, the audience will be given open access to the artist's actions and conversations, making the negotiation between the two artists, visible. This project is interested in making correlations between the notions of the 'performative' & the 'generative' and testing the edges of what drawing might mean.





## Mark Your Territory - Zine & Poster Fair

Presented by WTS and Red Dirt Poetry Festival

28 – 31 July

EXHIBITION AND ZINE FAIR JULY 31 , 3PM – 7PM

1. Suppose we begin with a welcome, or a thank you.
2. Suppose we begin again, with a slogan or a statement. There are many to choose from and plenty to stand behind. Sovereignty never ceded. The personal is political. Give peace a chance, close the gap, and don't frack the Territory.
3. Territory. What territory?
4. It's ours, we might say. But who are we? What kind of territory?
5. And so, it begins. The drum machine, the printing press. Counting backwards from ourselves we find patterns. There are those who say community is always imagined, the 'us' we assume to avoid an endless, solitary 'me'. We have things in common. Together, we make noise and fires and plans. We mark the land with houses and symbols, our drawings in the sand. We have myths and legends to make us whole. We build upwards. We don't need a map.
6. But geography is never innocent. How do we stand our ground, when our ground is contested and contrived at every step? Each day the land we belong to is claimed, remade, and redivided.
7. You are invited to mark your territory. Stake your claim, make your point and raise your voice — even if all language fails to catch us as we are. Especially if language fails. Watch This Space invites you to create a poster, zine or other print media, based on the themes of marking your territory, community-based action and local grassroots activism.
8. The walls at Watch This Space will be available for your posters throughout the weekend of Red Dirt Poetry Festival. Please create and print your zines or posters, and come to the gallery to stick them up from 29 — 31 July.
9. On Sunday 31 July at 3PM, a group exhibition of all submitted material will be opened along with a zine fair, leading all the way into the Red Dirt afterparty.
10. Objects have loud voices. Everything you submit will be displayed amongst an assortment of 'disobedient objects' from past demonstrations, protests and community action in Alice. If you have any such objects (banners, patches, zines, newsletters, posters etc.) please get in touch! Everything will be well looked after and returned following the exhibition.
11. Finally, if you don't have time to create a poster or a zine, a Mark Your Territory exhibition zine is in the making. Send your poetry, prose, pictures and any questions to [markyourterritory@wts.org.au](mailto:markyourterritory@wts.org.au)
12. You do have time! Download a submission form and email it to [markyourterritory@wts.org.au](mailto:markyourterritory@wts.org.au). Then choose a pen and get marking... [www.reddirtpoetryfestival.com/](http://www.reddirtpoetryfestival.com/)

## Darren Hanlon @ Watch This Space

16 August

Supported by  
Grand Magoozi  
Eric Isaacson  
Dave Crowe  
&  
Ash Steel

Urban folk singer/songwriter Darren Hanlon is coming to Alice Springs on 16th August, as part of a giant 23 show, 4 week, 8000km tour into some of the most remote communities in Australia.

"I love the challenges in seeking new places in your own country," he says, "In my experience every town out there is different in what they expect out of a band so you've gotta be pretty malleable and thick-skinned. It's boot camp for the entertainer".

Coming along with him to open are Melbourne's folk songsters the Grand Magoozi. Also along for the ride is Eric Isaacson, owner and curator of Portland OR label and shop Mississippi Records. Through his exclusive access to the Alan Lomax film archives, Eric has assembled a short collage of rare and never before seen footage of some great moments in the history of American music to project through the evening.

Local singer/songwriters Dave Crowe and band and Ash Steel will open up the night, and the Alice Sings pop choir will join Darren for a very special collaboration.

Tickets: \$13 - <http://flippinyeahindustries.bigcartel.com/product/darren-hanlon-alice-springs-tuesday-16th-august-11-2-booking>  
or at the door \$15

Also,  
Empanadas by Doritas, Mashmallows, Dainty Tea



5/8 - Railway Club - Darwin NT	18/8 - Daly Waters Pub - Daly Waters NT	30/8 - Royal Theatre - Winton QLD
10/8 - The Shamrock Hotel - Birchip VIC	19/8 - Mimi Arts - Katherine NT	31/8 - Commercial Hotel - Barcaldine QLD
11/8 - The Palace Hotel - Broken Hill NSW	20 & 21/8 - Territory Manor - Mataranka NT	1/9 - Evening Star Tourist Park - Charleville QLD
12/8 - Blacksmith's Chatter - Dimboola SA	22/8 - Arts Centre - Mynyerrri NT	2/9 - Gidgee Guest House - Bourke NSW
13/8 - The Prairie Hotel - Parachina SA	23/8 - Arts Centre - Ngukkur NT	3/9 - Teongi Hall - Dubbo NSW
16/8 - Watch This Space - Alice Spring NT	24/8 - Savannah Way Motel - Borroloola NT	4/9 - Jackson's Bakery & Cafe - Harden NSW
17/8 - Memorial Club - Tennant Creek NT	26/8 - PCYC - Deomadgee QLD	6/9 - Newtown Social Club - Sydney NSW
	28/8 - The Shack - Mount Isa QLD	



## Mind the Gap

An exhibition by Kristian Laemmle-Ruff

9 Sept – 1 Oct

Exhibition Opening

6-9PM FRIDAY 16 SEPT

Kieran Finnane to be guest speaker for Opening Night

Mind the Gap is a somewhat dark and politically charged meditation on the gap between Australian cultures. It is not asking us to close the gap, to homogenise or assimilate; rather it asks us to acknowledge the gap, nurture the gap, celebrate the diversity rather than deny its existence. It encourages us to question and hold ourselves accountable for our actions as global citizens. The work aims to highlight colonial mannerisms and differences between Aboriginal and non-Aboriginal ways of understanding and valuing land.

Mind the Gap encourages us to imagine a future with deeper reconciliation and stronger acknowledgment of our true history rather than having our heads in the sand.



SPY FEEL  
Beth Sometimes

5 October, 5am

????????????????????????????????????  
double agents of the inland sea. who is spying on who?  
is giving too much away not giving away enough?  
the artist is always working. the artist is a spy.  
everyone is a spy & everything is a clue.  
unwitting agents for THEM  
just keep breathing thru it  
ambiguous gestures  
your body knows  
what it's up to  
??????

join us at 5am SHARP  
wear loose clothing  
make sure no one is  
following u



## Sunset Viewing Area

By *Truckin' Life* artists Ellah Blake, Nic Diprose and Sienna Thornton

26 – 28 Oct

*It's like when you first see it it's surreal, it's like what someone would have thought when they first saw a giraffe. You see the classic view, it's a flat little thing, it's absolutely extraordinary, every time the light changes it's incredible when you look at it and you change the angle and it's not what the observer makes to see what it means to them. The Zulu shaman gave me a gift once, we give gifts that say to see in it what you want to see in it it's like you're looking at a completely different place, sometimes you come to place, well this was what I expected. Credible inspiration, a gigantic energy field, in that direction a series of rocks call many heads from the distance, once again flat from the earth an extraordinary sight, quite a distance apart the two are extension of formation. And. We flew in and we looked down and we went aawww. The timelessness, its spiritual, its deep, its timeless. We're creating emotion and feelings I hope it's going to blow me away, I want to be blown away. Orion's belt just staring down on me. When you're up close. The colours. The silence. Take a scenic flight join a small guided tour group. The rugged beauty. Witness the sunset. Offering optimum panoramic views. Wow what a trip. Stunning. Breath in, breath out, breath in Don't let your celebrations end with a trip to the emergency ward, remember to watch your eyes when popping a cork.*





## SHY GUISE

The 2<sup>nd</sup> Mparntwe/Alice Springs Zine Fair  
Run by Betty Sweetlove and Beth Sometimes

24 November

Narratives make our world.

Zines are self-published li'l books or mini magazines...

The last Zine Fair brought some beauties out of the shadows and SHY GUISE is another imaginary, real deadline to make something to share with the people...

This time only fresh material and you can make something onsite!

Also if your frenz/fam have cool taste they can buy prezzies!

## Feminising the Power Tool

By J9 Stanton

26 Nov – 9 Dec

Past Lofty winner, J9 Stanton, will be exhibiting a collection of her newest works as part of our 2016 Lofty celebrations.

“These works are a group of power tools from my metal workshop recreated in foam, covered with sewn hessian, with painted lace patterns on them. They are a marrying of two very different aspects to my creative practice, the feminine and masculine, sewing and welding. The contrasting of these approaches to art making have fascinated me for some time, and in a way speak of a perception of life of which I am familiar with, that is a life of extremes, black and white, soft and hard, fluffy and spiky. It is the ambiguity created by the amalgamation of such opposites that feed my inspiration.”

### THE POWER TOOL SOUNDSCAPE

Musicians David Williams and Sooji Kim have been invited to use extensive recordings of the power tools to mix, warp and shape the normally harsh sounds into melodic forms and come up with a soundscape to accompany the art works.

David and Sooji will be performing the soundscape live at the Loftys starting at 6pm.





## The Annual Lofty Art Awards

26 November

It's that time of year again...

☆ PARTY ☆ TIME!!! ☆

Please join us in celebrating the incredible talent of our artists in Central Australia by attending our annual Lofty Award Night and EOY Celebrations on SATURDAY 26th NOVEMBER from 6PM-MIDNIGHT. The Lofty Award is the Centre's annual independent art award, designed to celebrate high endeavour in arts practice in Central Australia. One artist will be selected by the general public and members of the WTS selection committee.

There will be food, there will be booze, there will be outstanding company and a line up of weird and wonderful entertainment throughout the whole evening, and of course... the presentation of the 2016 Lofty Award and trophy!

### LINE-UP

▽ Sooji Kim & Dave Williams ▽

、 MS XAVIA 、

) RESIN MOON (

performing with a secret sexy someone...

△ The Not Real Cowboys - Lonesome Twosome △

☼ BEC MATTHEWS & KING MARONG ☼

⚡ Edward Francis (DJ set) ⚡



## Debatable Estates

26 November

EXHIBITION OPENING  
Saturday 10th December,  
6-9pm

A pop-up exhibition by our current Travelling Artists in Residence: Hannah Ekin, Jorgen Doyle and Angus Webb.

### *Debatable:*

*Open to discussion or argument.*

*Arguable, disputable, questionable, open to question, open to debate.*

*Controversial, contentious, doubtful, open to doubt, dubious, uncertain, unsure, unclear, vague, borderline, inconclusive, moot, unsettled, unresolved, unconfirmed, undetermined, undecided, unknown, up in the air, not yet established.*

### *Estate(s):*

*A piece of landed property, especially one of large extent with an elaborate house on it.*

*The legal position or status of an owner, considered with respect to property owned in land or other things.*

*The degree or quantity of interest that a person has in land with respect to the nature of the right, its duration, or its relation to the rights of others.*

*Interest, ownership, or property in land or other things.*

Debatable Estates explores contemporary Alice Springs as a site of contact between different, yet mutually implicated, modes of settlement. These contemporaneous modes of settlement are works in progress, reproduced through ongoing, often stark, encounters. Yet the ground on which these encounters occur is itself up for debate, and the topography upon which settlement occurs remains unresolved. Debatable Estates asks whether conceptions of settlement might be productively shifted through a radical doubting of the ground on which foundations are laid and plans concretised, and whether this doubt might renew settlement as a site for meaningful encounter.

Exhibition runs for a short time only with special opening times for the gallery on Sunday 11th and Monday 12th from 10am-5pm.

## Our Program + Our Organisational Goals

	To create opportunities for local artists work to be discovered and made visible through hosting contemporary art exhibitions.	To provide opportunities for local, interstate and international artists to enrich the artistic and cultural life of Alice Springs through the delivery of high quality contemporary art activities.	To foster an inclusive creative community of artists who share skills and experiences with each other by accessing the onsite gallery and studio space.	To create professional development opportunities for artists including artistic and cultural collaborations, critical development and skills development.	To nurture the full breadth of contemporary visual art activities including multi-disciplinary art forms, new media and installation works.
Alice Sings Pop-Choir	■	■	■	■	■
David Bowe Memorial Weekend		■			■
Labyrinth	■	■	■	■	■
Reconnaissance	■	■	■	■	■
125 in 110 Zone		■	■	■	■
Melankolia & Metamorphoses	■	■	■	■	■
Re-wilding Laboratory		■	■	■	■
Splendour in the Alice Industrial Area	■	■	■	■	■
The Togetherness Of Things		■	■	■	■
Mark Your Territory - Zine & Poster Fair		■		■	■
Darren Hanlon	■	■	■		
Mind the Gap		■	■	■	■
SPY FEEL	■	■	■		■
Sunset Viewing Area		■	■	■	■
SHY GUISE Zine Fair	■	■	■	■	■
Feminising the Power Tool	■	■	■	■	■
The Annual Lofty Art Awards	■	■	■	■	■
Debatable Estates	■	■	■	■	■

## Treasurer's Report

### AND ANNUAL ACCOUNTS

2016 was a transition year for the WTS. Following the resignation of the previous coordinator and bookkeeping services, we took some time to rebuild the structure of the operational side of the organisation with improvements in the Bookkeeping and Financial Management and Management/Coordination of the Centre

Improvements in the Gallery space which included new flooring and walls, allowed WTS to offer additional space for Gallery Rental and Office Space.

It should be noted that with the advent of the new Coordinator income from Exhibits, Rental of Offices and Art Spaces, Donations and Sponsorships and self-generated earned income increased from \$13,266.99 in 2015 to \$30,422.60 in 2016.

There was a decrease in "Other Grants", and the new Coordinator; as well as; Board members attended a Grant Writing Workshop in an endeavor to inform other members and offer assistance for auspicing future grants.

Even with the decrease in "other Grants" WTS ended the year with a profit for the year of \$21,608.08 compared to 2015 of \$14,729.97.

It is good to note that most Board members attended a Governance Workshop and will make this training an Annual occurrence.

I feel that WTS is in a good financial position. I would like to thank the auditor Brian Tucker for always assisting and supporting WTS and the Coordinator Zoya Godoroja-Prieckaerts.

Sincerely,

**Janet Wright**  
WTS Treasurer

Watchthis  
SPACE<sup>inc</sup>



**2 0 1 6**  
**FINANCIAL**  
**STATEMENT**

**WATCH THIS SPACE INC**  
**ABN 97 802 366 496**

**FINANCIAL REPORT**  
**FOR THE YEAR ENDED**  
**31 DECEMBER 2016**



**WATCH THIS SPACE INC**  
**ABN 97 802 366 496**

**CONTENTS**

Committee's Report	1
Income Statement	2
Balance Sheet	5
Notes to the Financial Statements	6
Statement by Members of the Committee	11
Auditor's Report	12
Certificate by Members of the Committee	14

**WATCH THIS SPACE INC  
ABN 97 802 366 496**

**COMMITTEE'S REPORT**

Your committee members submit the financial report of the Watch This Space Inc for the financial year ended 31 December 2016.

**Committee Members**

The name of each member of the committee during the year and if different, at the date of the report;

Daniel Murphy  
Dave Crowe  
Ed Gould  
Joaquin Hourbeigt  
Amanda McMillan  
Frankie Snowdon  
Beth Sometimes

**Principal Activities**

The principal activities of the association during the financial year were:

create and support a dynamic, artistic and sustainable community in Alice Springs, promote contemporary arts practice and provide artists with an accessible platform for development within a constructive critical environment.

**Significant Changes**

No significant change in the nature of these activities occurred during the year.

**Operating Result**

The profit of the association after providing for income tax amounted to \$21,608.08.

Signed in accordance with a resolution of the Members of the Committee.

**Committee Member:** \_\_\_\_\_  
Daniel Murphy

**Committee Member:** \_\_\_\_\_  
Amanda McMillan

**Dated this            day of May 2017**

**WATCH THIS SPACE INC**  
**ABN 97 802 366 496**

**INCOME STATEMENT**  
**FOR THE YEAR ENDED 31 DECEMBER 2016**

Note	2016 \$	2015 \$
<b>INCOME</b>		
Exhibition Fees & Commissions	4,336.64	3,292.80
Rental Receipts	10,263.05	7,601.47
Donations & Sponsorship	8,427.10	2,085.00
Earned Income	7,395.81	287.72
	30,422.60	13,266.99
<b>OTHER INCOME</b>		
Interest Received	740.62	1,605.44
Recoveries	45.45	890.65
Prior Period Transactions	-	346.73
<b>Grants Expended</b>		
Arts NT, Operational Funding	73,047.00	78,551.28
Arts NT, Quick Response Grant	-	1,650.00
Arts NT, 21 Years of Watch This Space	20.00	7,120.96
Arts NT, Megafauna Project	-	25,000.00
Arts NT, Painting Exhibition	19,727.00	-
Australia Council, Visual Arts & Crafts Strategy	-	12,500.00
Community Benefit Fund, J Bird	-	5,000.00
DFACS, Volunteer Grant	-	244.32
	92,794.00	130,066.56
	93,580.07	132,909.38
	124,002.67	146,176.37

The accompanying notes form part of these financial statements.

**WATCH THIS SPACE INC**  
**ABN 97 802 366 496**

**INCOME STATEMENT**  
**FOR THE YEAR ENDED 31 DECEMBER 2016**

	Note	2016 \$	2015 \$
<b>EXPENDITURE</b>			
Accounting & Bookkeeping Services		788.55	2,224.00
Advertising		90.91	1,545.45
Artists' Fees		4,172.55	20,912.89
Auditor's Remuneration		2,331.00	3,036.00
Bank Charges		-	4.00
Catering & Refreshments		300.00	1,032.35
Consultancy Fees		8,647.78	-
Computer & IT Expenses		-	621.27
Depreciation - Office Furniture & Equipment		1,989.55	1,498.64
Electricity		2,015.22	2,150.29
Email, Internet & Website		380.77	1,167.83
Fees & Permits		1,206.70	51.00
Fundraising Expenses		105.75	2,105.31
Freight & Couriers		-	626.63
Hire of Equipment, Facilities & Services		-	2,617.29
Holiday Pay, Movement in Provision		(6,186.28)	5,061.28
Insurance		9,201.74	-
Materials		797.69	-
Postage		337.64	800.77
Printing, Invitations, Catalogues etc		904.76	1,545.00
Printing & Stationery		450.31	889.47
Prizes & Awards		2,500.00	-
Professional Development		236.10	97.05
Professional Services & Project Management		-	5,519.36
Purchase of Expensed Assets		-	1,397.51
Rent		19,427.27	19,200.00
Repairs & Maintenance		2,817.31	292.03
Studio & Gallery Expenses		-	647.71
Subscriptions		958.99	-
Sundry Expenses		175.00	150.00
Superannuation Contributions		3,363.00	4,338.14
Telephone		1,691.50	1,675.63
Travelling Expenses		1,752.44	-
Wages		41,883.00	50,239.50
Workers' Compensation Insurance		55.34	-
		102,394.59	131,446.40
Profit before income tax		21,608.08	14,729.97

The accompanying notes form part of these financial statements.

**WATCH THIS SPACE INC**  
**ABN 97 802 366 496**

**INCOME STATEMENT**  
**FOR THE YEAR ENDED 31 DECEMBER 2016**

	Note	2016 \$	2015 \$
<b>Profit for the year</b>		21,608.08	14,729.97
Retained earnings at the beginning of the financial year		131,978.42	117,248.45
<b>Retained earnings at the end of the financial year</b>		153,586.50	131,978.42

The accompanying notes form part of these financial statements.

**WATCH THIS SPACE INC**  
**ABN 97 802 366 496**

**BALANCE SHEET**  
**AS AT 31 DECEMBER 2016**

	Note	2016 \$	2015 \$
<b>ASSETS</b>			
<b>CURRENT ASSETS</b>			
Cash and cash equivalents	3	111,589.86	125,175.46
Trade and other receivables	4	18,866.16	48,130.15
Prepayments		2,606.28	7,530.63
<b>TOTAL CURRENT ASSETS</b>		<u>133,062.30</u>	<u>180,836.24</u>
<b>NON-CURRENT ASSETS</b>			
Property, plant and equipment	5	42,968.75	1,955.36
<b>TOTAL NON-CURRENT ASSETS</b>		<u>42,968.75</u>	<u>1,955.36</u>
<b>TOTAL ASSETS</b>		<u>176,031.05</u>	<u>182,791.60</u>
<b>LIABILITIES</b>			
<b>CURRENT LIABILITIES</b>			
Trade and Other Payables	6	22,444.55	31,066.18
<b>Unexpended Grants</b>			
Arts NT, 21 Years of Watch This Space		-	20.00
Arts NT, Painting Exhibition		-	19,727.00
		-	19,747.00
<b>TOTAL CURRENT LIABILITIES</b>		<u>22,444.55</u>	<u>50,813.18</u>
<b>TOTAL LIABILITIES</b>		<u>22,444.55</u>	<u>50,813.18</u>
<b>NET ASSETS</b>		<u>153,586.50</u>	<u>131,978.42</u>
<b>MEMBERS' FUNDS</b>			
Retained earnings	7	153,586.50	131,978.42
<b>TOTAL MEMBERS' FUNDS</b>		<u>153,586.50</u>	<u>131,978.42</u>

The accompanying notes form part of these financial statements.

**WATCH THIS SPACE INC**  
**ABN 97 802 366 496**

**NOTES TO THE FINANCIAL STATEMENTS**  
**FOR THE YEAR ENDED 31 DECEMBER 2016**

---

The financial statements cover Watch This Space Inc as an individual entity. Watch This Space Inc is a not for profit Association incorporated in the Northern Territory under the Associations Incorporation Act (NT) 1991 ('the Act').

The functional and presentation currency of Watch This Space Inc is Australian dollars.

Comparatives are consistent with prior years, unless otherwise stated.

## **1 Basis of Preparation**

In the opinion of the Committee of Management, the Association is not a reporting entity since there are unlikely to exist users of the financial report who are not able to command the preparation of reports tailored so as to satisfy specifically all of their information needs. These special purpose financial statements have been prepared to meet the reporting requirements of the Act.

The financial statements have been prepared in accordance with the recognition and measurement requirements of the Australian Accounting Standards and Accounting Interpretations, and the disclosure requirements of AASB 101 Presentation of Financial Statements, AASB 107 Statement of Cash Flows, AASB 108 Accounting Policies, Changes in Accounting Estimates and Errors and AASB 1054 Australian Additional Disclosures.

Significant accounting policies adopted in the preparation of these financial statements are presented below and are consistent with prior reporting periods unless otherwise stated.

The financial statements have been prepared on an accruals basis and are based on historical costs modified, where applicable, by the measurement at fair value of selected non-current assets, financial assets and financial liabilities.

## **2 Summary of Significant Accounting Policies**

### **Plant and Equipment**

Plant and equipment is carried at cost or fair value less, where applicable, any accumulated depreciation and impairment of losses. Plant and equipment is depreciated on a straight line basis over the assets useful life to the Association, commencing when the asset is ready for use.

The depreciable amount of all plant and equipment is depreciated over the useful lives of the assets to the Association commencing from the time the asset is held ready for use.

**WATCH THIS SPACE INC**  
**ABN 97 802 366 496**

**NOTES TO THE FINANCIAL STATEMENTS**  
**FOR THE YEAR ENDED 31 DECEMBER 2016**

---

**Impairment of Non-Financial Assets**

At the end of each reporting period the association determines whether there is an evidence of an impairment indicator for non-financial assets.

Where this indicator exists and regardless for goodwill, indefinite life intangible assets and intangible assets not yet available for use, the recoverable amount of the asset is estimated.

Where assets do not operate independently of other assets, the recoverable amount of the relevant cash-generating unit (CGU) is estimated.

The recoverable amount of an asset or CGU is the higher of the fair value less costs of disposal and the value in use. Value in use is the present value of the future cash flows expected to be derived from an asset or cash-generating unit.

Where the recoverable amount is less than the carrying amount, an impairment loss is recognised in profit or loss.

Reversal indicators are considered in subsequent periods for all assets which have suffered an impairment loss.

**Employee Benefits**

Provision is made for the association's liability for employee benefits arising from services rendered by employees to the end of the reporting period. Employee benefits that are expected to be wholly settled within one year have been measured at the amounts expected to be paid when the liability is settled.

Employee benefits expected to be settled more than one year after the end of the reporting period have been measured at the present value of the estimated future cash outflows to be made for those benefits. In determining the liability consideration is given to employee wage increases and the probability that the employee may satisfy vesting requirements. Cash-flows are discounted using market yields on national government bonds with terms to maturity that match the expected timing of cash-flows. Changes in the measurement of the liability are recognised in profit or loss.

Employee benefits are presented as current liabilities in the balance sheet if the association does not have an unconditional right to defer settlement of the liability for at least one year after the reporting date regardless of the classification of the liability for measurement purposes under AASB 119.

**Cash and Cash Equivalents**

Cash and cash equivalents comprises cash on hand, demand deposits and short term investments which are readily convertible to known amounts of cash and which are subject to an insignificant risk of change in value.



**WATCH THIS SPACE INC**  
**ABN 97 802 366 496**

**NOTES TO THE FINANCIAL STATEMENTS**  
**FOR THE YEAR ENDED 31 DECEMBER 2016**

---

**Revenue and Other Income**

Revenue is recognised when the amount of the revenue can be measured reliably, it is probable that economic benefits associated with the transaction will flow to the association and specific criteria relating to the type of revenue as noted below, has been satisfied.

All revenue is stated net of the amount of goods and services tax (GST).

Revenue is measured at the fair value of the consideration received or receivable and is presented net of returns, discounts and rebates.

**Interest revenue**

Interest revenue is recognised using the effective interest rate method.

**Rendering of services**

Revenue in relation to rendering of services is recognised depending on whether the outcome of the services can be estimated reliably. If the outcome can be estimated reliably then the stage of completion of the services is used to determine the appropriate level of revenue to be recognised in the period. If the outcome cannot be reliably estimated then revenue is recognised to the extent of expenses recognised that are recoverable.

If the outcome cannot be reliably estimated then revenue is recognised to the extent of expenses recognised that are recoverable.

Revenue from training services is generally recognised once the training has been delivered.

**Goods and Services Tax (GST)**

Revenues, expenses and assets are recognised net of the amount of goods and services tax (GST), except where the amount of GST incurred is not recoverable from the Australian Taxation Office (ATO).

Receivables and payables are stated inclusive of GST. The net amount of GST recoverable from, or payable to, the ATO is included as part of receivables or payables in the balance sheet.

**WATCH THIS SPACE INC**  
**ABN 97 802 366 496**

**NOTES TO THE FINANCIAL STATEMENTS**  
**FOR THE YEAR ENDED 31 DECEMBER 2016**

	<b>2016</b>	<b>2015</b>
	<b>\$</b>	<b>\$</b>
<b>3 Cash and Cash Equivalents</b>		
Bar Float	300.00	300.00
Cash on Hand, Artwork Sales Tin	1,086.00	100.00
Petty Cash	788.65	191.60
Cash at Bank, Cash Maximiser	66,460.70	95,730.15
Cash at Bank	<u>42,954.51</u>	<u>28,853.71</u>
	<u>111,589.86</u>	<u>125,175.46</u>
<b>4 Trade and Other Receivables</b>		
<b>Current</b>		
Trade Debtors	11,473.86	45,912.86
Input Tax Credits	<u>7,392.30</u>	<u>2,217.29</u>
	<u>18,866.16</u>	<u>48,130.15</u>
<b>5 Property, Plant and Equipment</b>		
Gallery Fittings & Fitout	43,002.94	-
Less: Accumulated Depreciation	<u>(939.00)</u>	<u>-</u>
	<u>42,063.94</u>	<u>-</u>
Office Furniture & Equipment	17,051.65	17,051.65
Less: Accumulated Depreciation	<u>(16,146.84)</u>	<u>(15,096.29)</u>
	<u>904.81</u>	<u>1,955.36</u>
<b>Total Plant and Equipment</b>	<u>42,968.75</u>	<u>1,955.36</u>
<b>Total Property, Plant and Equipment</b>	<u>42,968.75</u>	<u>1,955.36</u>
<b>6 Accounts Payable and Other Payables</b>		
<b>Current</b>		
Artists' Funds Held in Trust	1,530.00	6,030.00
Trade Creditors	994.75	4,585.95
Other Accounts Payable	5,025.78	5,476.16
GST Payable	13,643.02	6,680.79
ATO Integrated Client Account	955.00	955.00
Amounts Withheld	296.00	1,152.00
Provision for Holiday Pay	<u>-</u>	<u>6,186.28</u>
	<u>22,444.55</u>	<u>31,066.18</u>

**WATCH THIS SPACE INC**  
**ABN 97 802 366 496**

**NOTES TO THE FINANCIAL STATEMENTS**  
**FOR THE YEAR ENDED 31 DECEMBER 2016**

	2016	2015
	\$	\$
<b>7 Retained Earnings</b>		
Retained earnings at the beginning of the financial year	131,978.42	117,248.45
Net profit attributable to the association	<u>21,608.08</u>	<u>14,729.97</u>
Retained earnings at the end of the financial year	<u>153,586.50</u>	<u>131,978.42</u>

**STATEMENT BY MEMBERS OF THE COMMITTEE**

The committee has determined that the association is not a reporting entity and that this special purpose financial report should be prepared in accordance with the accounting policies outlined in Note 1 to the financial statements.

In the opinion of the committee the financial report as set out on pages 1 to 10:

1. Presents a true and fair view of the financial position of Watch This Space Inc as at 31 December 2016 and its performance for the year ended on that date.
2. At the date of this statement, there are reasonable grounds to believe that Watch This Space Inc will be able to pay its debts as and when they fall due.

This statement is made in accordance with a resolution of the Committee and is signed for and on behalf of the Committee by:

President:

  
\_\_\_\_\_  
Daniel Murphy

Treasurer:

  
\_\_\_\_\_  
Janet Wright

Dated this 22nd day of May 2017

**INDEPENDENT AUDITOR'S REPORT  
TO THE MEMBERS OF WATCH THIS SPACE INC  
ABN 97 802 366 496**

**Report on the Financial Report**

I have audited the accompanying financial report, being a special purpose financial report, of Watch This Space Inc (the association), which comprises the balance sheet as at 31 December 2016, and the income and expenditure statement for the year then ended, notes comprising a summary of significant accounting policies and other explanatory information, and the statement by members of the committee.

**Committee's Responsibility for the Financial Report**

The committee of the association is responsible for the preparation of the financial report that gives a true and fair view in accordance with Australian Accounting Standards (including the Australian Accounting Interpretations) and the Associations Act and for such internal control as the committee determines is necessary to enable the preparation of the financial report that gives a true and fair view and is free from material misstatement, whether due to fraud or error.

**Auditor's Responsibility**

My responsibility is to express an opinion on the financial report based on my audit. I conducted my audit in accordance with Australian Auditing Standards. Those standards require that I comply with relevant ethical requirements relating to audit engagements and plan and perform the audit to obtain reasonable assurance about whether the financial report is free from material misstatement.

An audit involves performing procedures to obtain audit evidence about the amounts and disclosures in the financial report. The procedures selected depend on the auditor's judgment, including the assessment of the risks of material misstatement of the financial report, whether due to fraud or error. In making those risk assessments, the auditor considers internal control relevant to the entity's preparation of the financial report that gives a true and fair view in order to design audit procedures that are appropriate in the circumstances, but not for the purpose of expressing an opinion on the effectiveness of the entity's internal control. An audit also includes evaluating the appropriateness of accounting policies used and the reasonableness of accounting estimates made by the committee, as well as evaluating the overall presentation of the financial report.

I believe that the audit evidence I have obtained is sufficient and appropriate to provide a basis for my audit opinion.

**INDEPENDENT AUDITOR'S REPORT  
TO THE MEMBERS OF WATCH THIS SPACE INC  
ABN 97 802 366 496**

**Auditor's Opinion**

In my opinion:

The financial report of Watch This Space Inc is in accordance with the Associations Act including:

- (i) giving a true and fair view of the Association's financial position as at 31 December 2016 and of their performance and cash flows for the year ended on that date; and
- (ii) complying with the Australian Accounting Standards.

The financial report also complies with International Financial Reporting Standards as disclosed in Note 1.

**Name of Firm:** Brian Tucker Accounting

**Name of Principal:**



---

Brian Tucker CPA

**Address:** 1/991 Stanley Street, East Brisbane, Qld 4169

**Dated this 11th day of May 2017**

**WATCH THIS SPACE INC  
ABN 97 802 366 496**

**CERTIFICATE BY MEMBERS OF THE COMMITTEE**

I, Daniel Murphy of Alice Springs, certify that:

- (a) I attended the annual general meeting of the association held on \_\_\_\_\_ (to be held on) 17th June 2017
- (b) The financial statements for the year ended 31 December 2016 were submitted to the members of the association at its annual general meeting.

**Dated this** 22<sup>nd</sup> **day of** May **2017**

**Committee Member:** \_\_\_\_\_

Daniel Murphy